

## How to tighten the screws

1. It is always recommended to tighten the screws deep enough. The tighter the screws are, the more stable a puzzle will be (and probably more stiff while making turns).

2. Always leave a little bit of radial space along the screw so that the center cap can be lifted by around 1~2mm for single layered models.

\*\*For those in-between models, like #65, #85, #88, #89, it is recommended to tighten further.

\*\*For neat multiple layered models like #61, #75, #87, tighten the screws to their full depth.

3. Rules of thumb. Tension adjustment is in general dependent on personal judgement. Different tension could result in very different feel. Start with simple models and accumulate your own sense. Use different springs, screws, nuts if you think the default set can't provide your favorite handle.

4. Previous description of sticking screws out of nuts by 1-3mm is misleading in some cases and is not anymore recommended. Reason: the height of caps varies in different models.

VeryPuzzle  
2021/08/06

# VeryPuzzle



**Rhombic Tuttminx V1.0 F1**

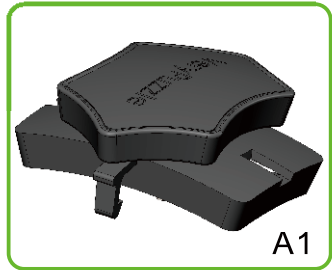
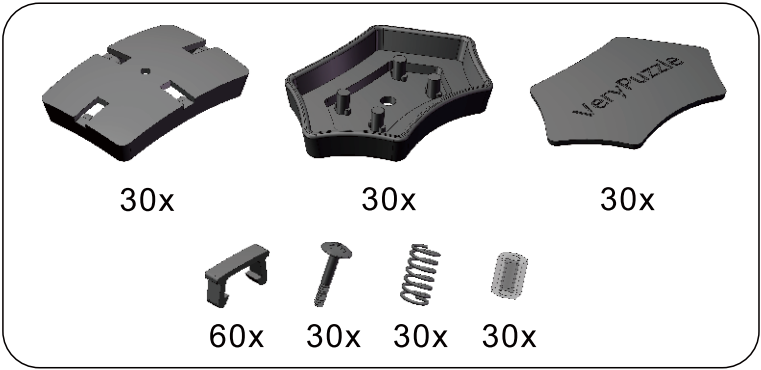
**D1RT5-M5-F1**

**#65**

1000+ parts  
42 axes

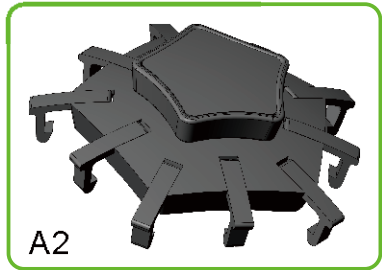
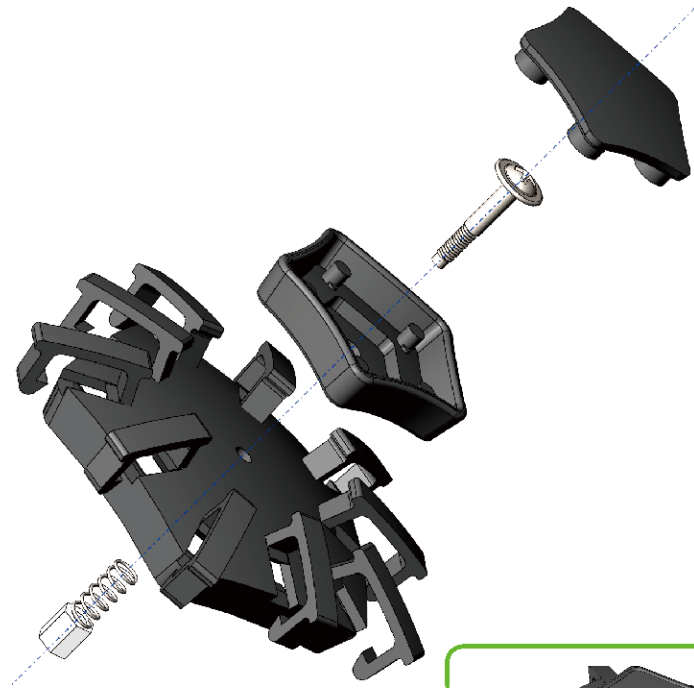
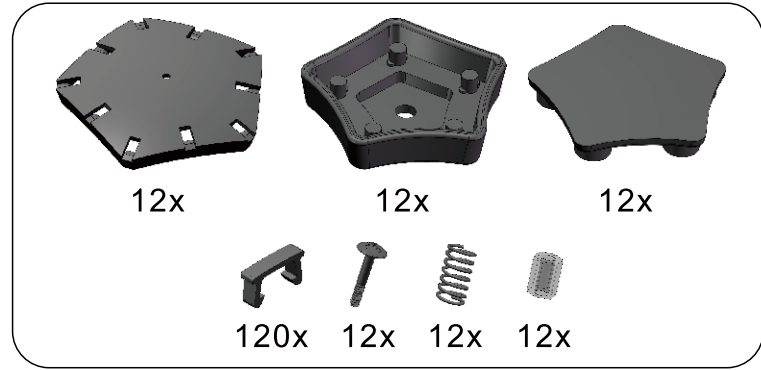


1



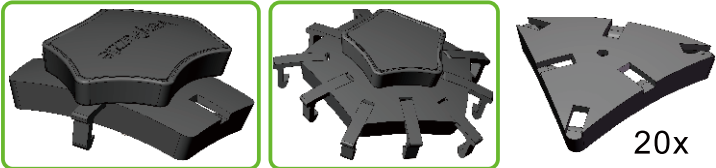
30x

2



12x

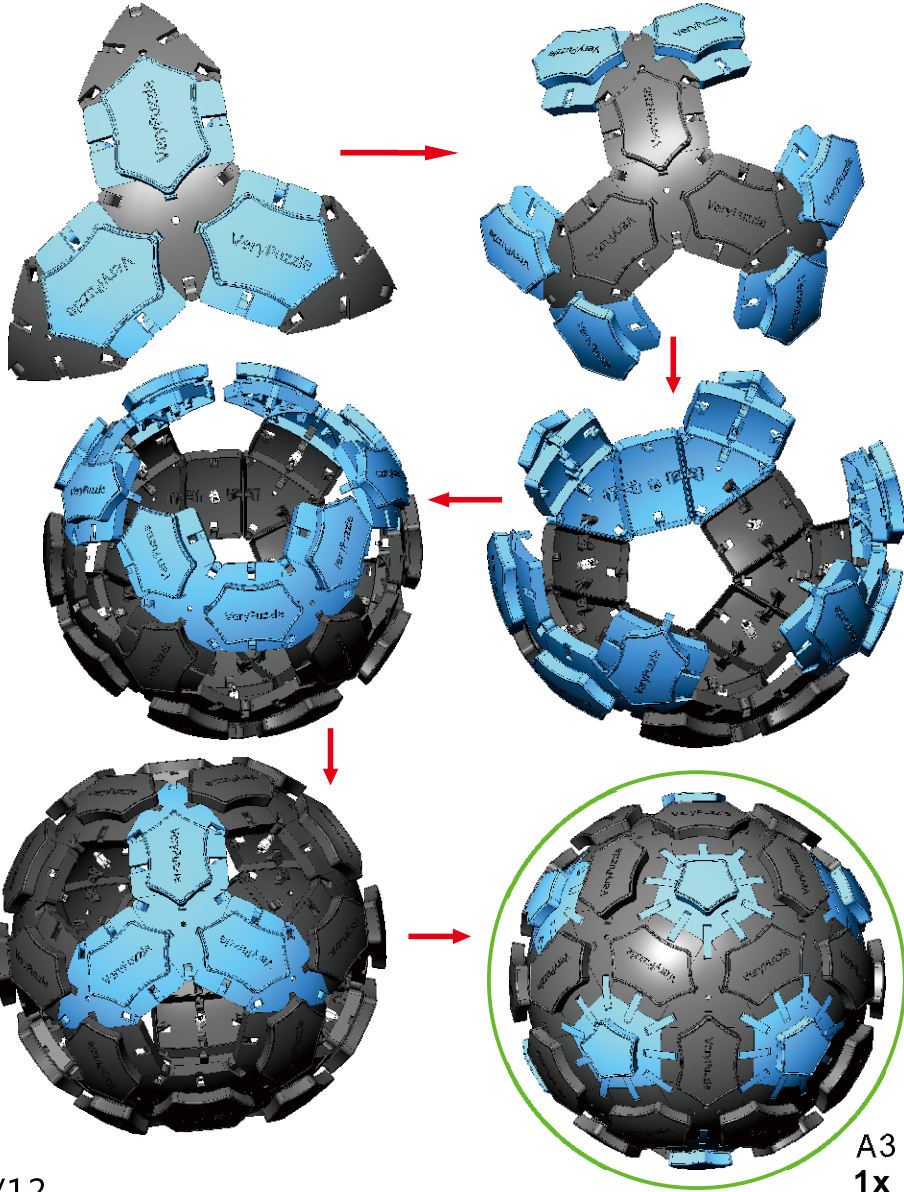
3



A1 30x

A2 12x

20x



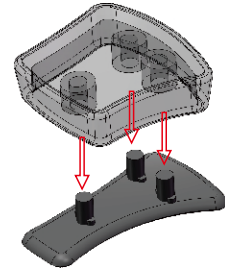
A3 1x

4



60x

60x



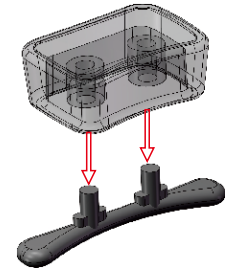
A4 60x

5



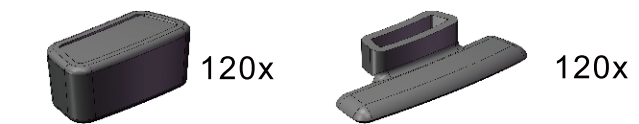
60x

60x



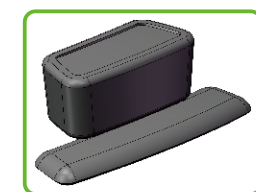
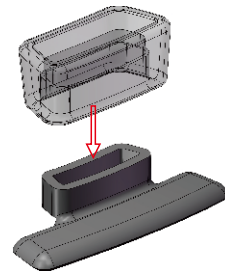
A5 60x

6



120x

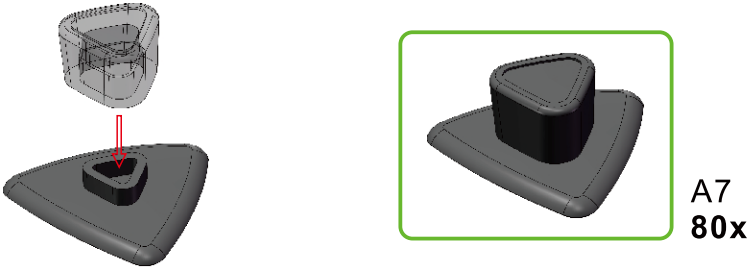
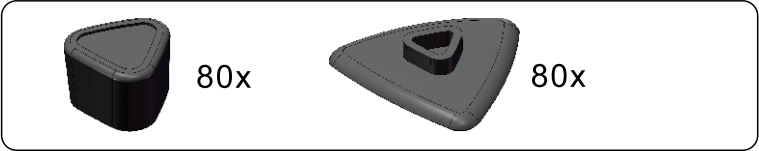
120x



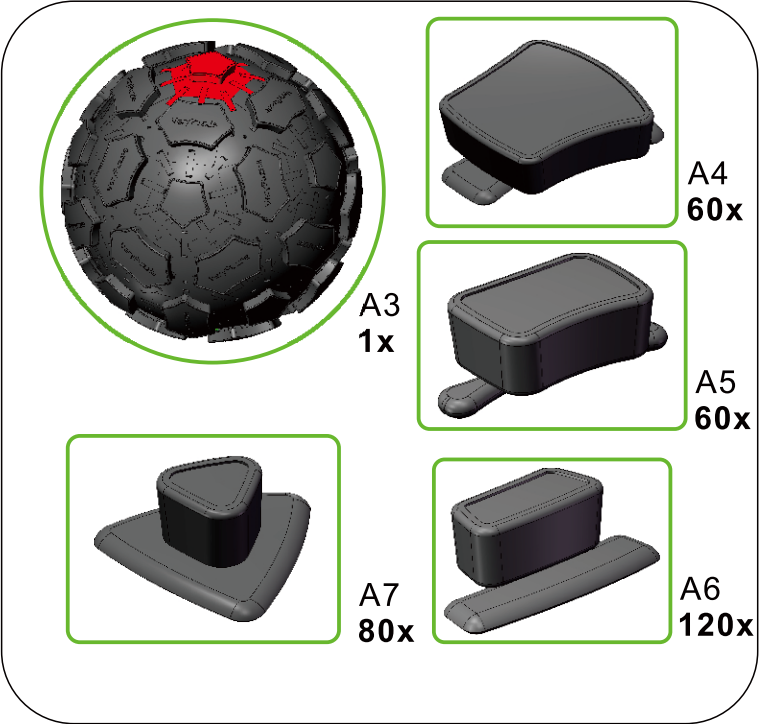
A6 120x



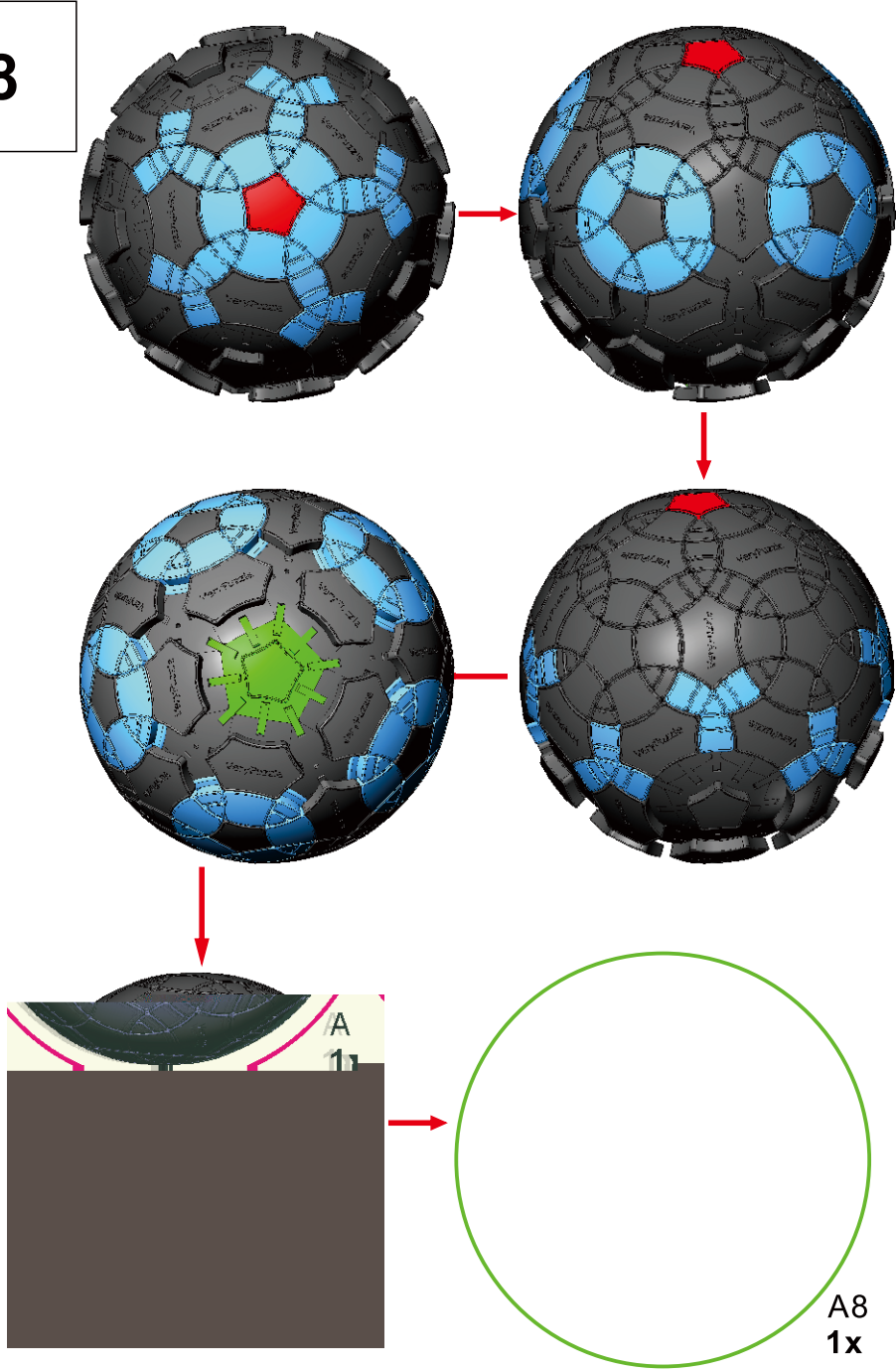
7



8

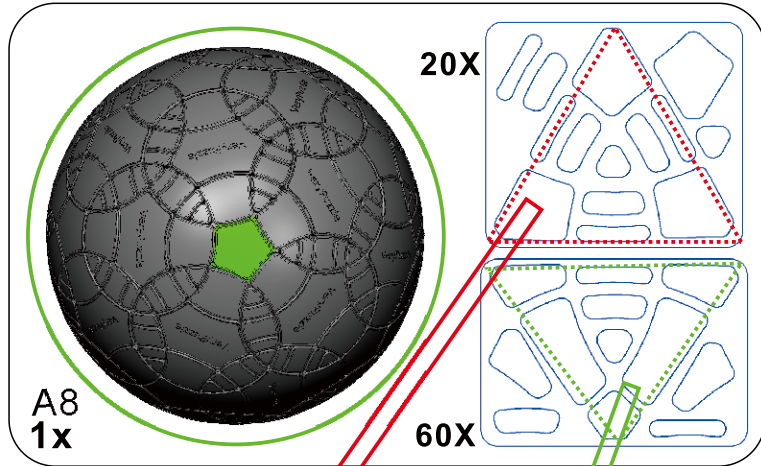


8





9



10

# Rotation Rules

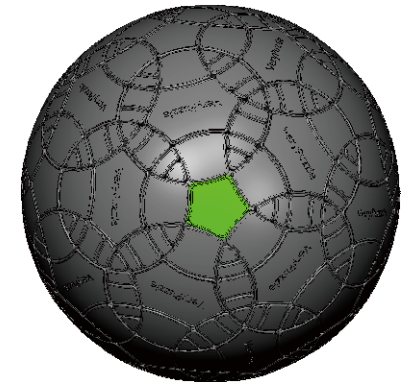
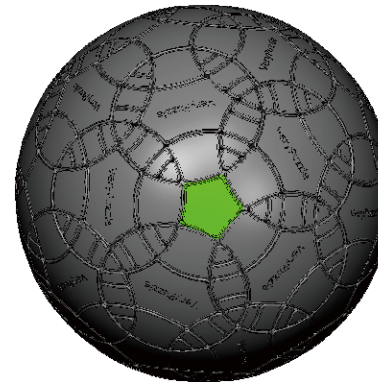


5-fold symmetry  
Turns  $72 \cdot n$  degrees

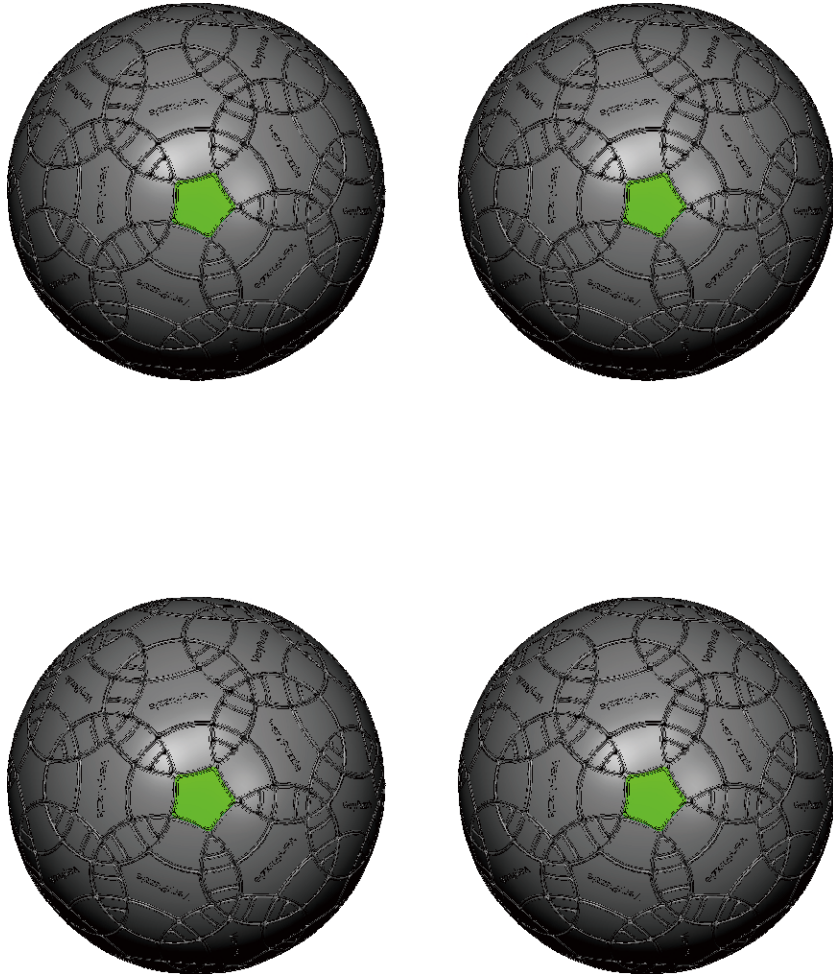


R4 symmetry  
Turns  $180 \cdot n$  degrees  
Turns  $180 \cdot n + 63.4$  degrees

# Notations and Algorithms

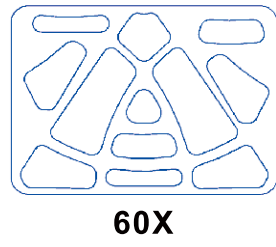
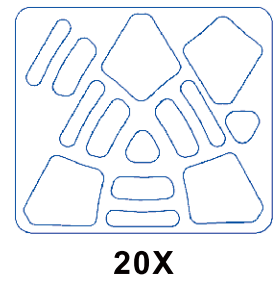
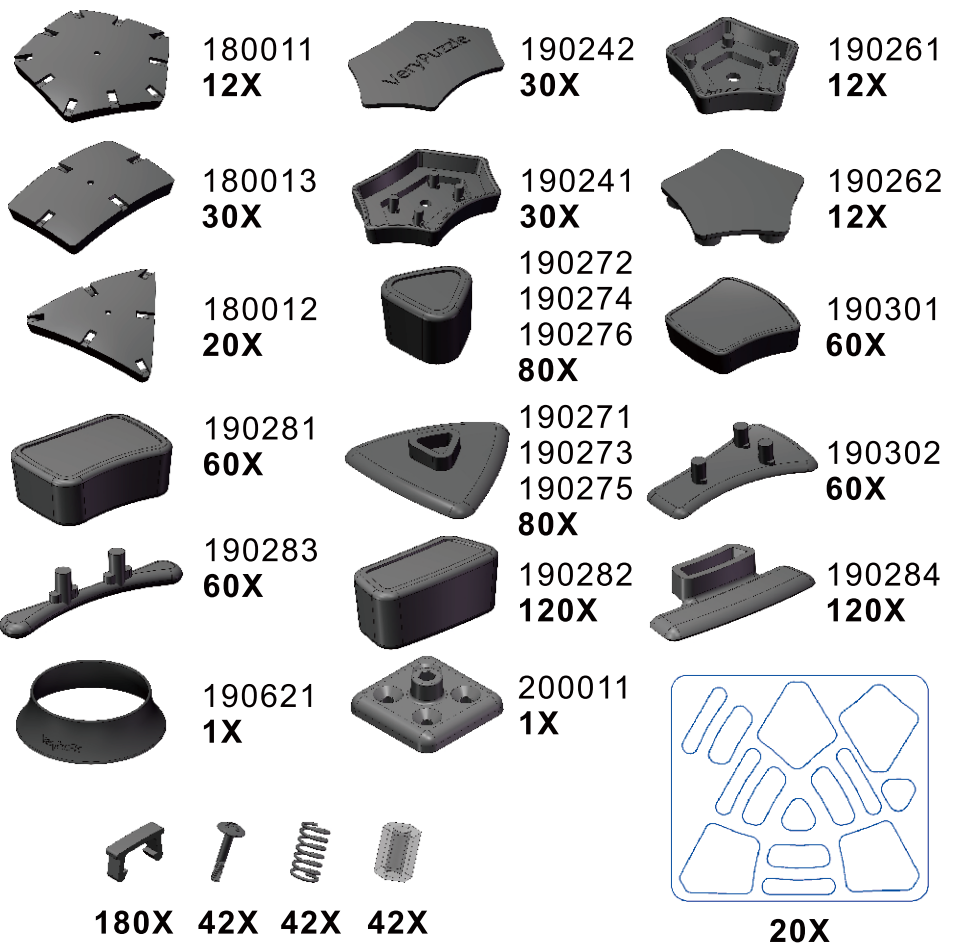


# Notations and Algorithms



# Product Information Card

<b>Product Name</b>	Rhombic Tuttminx V1.0 F1
<b>Model NO.</b>	#65
<b>Design</b>	VeryPuzzle Co., Ltd(HK)
<b>Manufacturer</b>	VeryPuzzle Co., Ltd(HK)
<b>Year of release</b>	2019
<b>Maximum diameter</b>	145 mm
<b>Visible moving parts</b>	362 pcs
<b>Assembly challenge</b>	★★★★☆☆☆☆
<b>Solving challenge</b>	★★★★☆☆☆☆
<b>Stickers strategy</b>	Voronoi
<b>Sticker material</b>	Textured, flare, uniform
<b>Color scheme</b>	80 colors
<b>Sticker protection</b>	Yes
<b>Number of stickers</b>	580 pcs
<b>Axis &amp; Symmetry</b>	D(C5)+RT(R4)
<b>In-core spring</b>	Yes
<b>Adjustable tension</b>	No
<b>Technical Name</b>	D1RT5-M5-F1
<b>Topological Print</b>	D23RT24
<b>Core specification</b>	DIRT130



## Customer Service

1. [support@verypuzzle.com](mailto:support@verypuzzle.com)

